



Ektron

eBusiness the way it should be



eWebEditPro PHP Installation and Integration Guide

Version 1.8.0.12

Ektron Inc.
5 Northern Blvd., Suite 6
Amherst, NH 03031
Tel: +1 603-594-0249
Fax: +1 603-594-0258
Email: sales@ektron.com
<http://www.ektron.com>

Copyright 2001 Ektron, Inc. All rights reserved.

Revision 2, January, 2001

EKTRON, INC. SOFTWARE LICENSE AGREEMENT

**** READ THIS BEFORE LOADING SOFTWARE ****

YOUR RIGHT TO USE THE PRODUCT ENCLOSED IN THIS ENVELOPE OR OTHERWISE DELIVERED IS SUBJECT TO THE TERMS AND CONDITIONS SET OUT IN THIS LICENSE AGREEMENT. OPENING THIS ENVELOPE OR USING THIS PRODUCT SIGNIFIES YOUR AGREEMENT TO THESE TERMS. IF YOU DO NOT AGREE TO THIS SOFTWARE LICENSE AGREEMENT, YOU MAY RETURN THE PACKAGE WITH THE UNOPENED ENVELOPE OR AS IT WAS DELIVERED AND THE UNDAMAGED SOFTWARE ENCLOSED, ALONG WITH THE RECEIPT, TO YOUR SUPPLIER OR TO EKTRON, INC. WITHIN THIRTY DAYS FROM THE DATE OF PURCHASE FOR A FULL REFUND.

CUSTOMER should carefully read the following terms and conditions before using the software program(s) contained herein (the Software). Opening this sealed envelope, and/or using the Software or copying the Software onto CUSTOMER'S computer hard drive indicates CUSTOMER'S acceptance of these terms and conditions. If CUSTOMER does not agree with the terms of this agreement, CUSTOMER should promptly return the unused and unopened Software for a full refund.

Ektron, Inc. (Ektron) grants, and the CUSTOMER accepts, a nontransferable and nonexclusive License to use the Software on the following terms and conditions:

1. Right to use: The Software is licensed for use only in delivered code form. Each copy of the Software is licensed for use only on a single URL. Each license is valid for the number of seats listed below (the Basic Package). Any use of the Software beyond the number of authorized seats contained in the Basic Package without paying additional license fees as provided herein shall cause this license to terminate. This is not a concurrent use license. Should CUSTOMER wish to add seats beyond the seats licensed in the Basic Package, the CUSTOMER may add seats on a block basis at the then current price for additional seats (see product pages for current price). The Basic Packages are as follows:

eWebEditPro - Licensed for ten (10) seats per URL.

For purposes of this section, the term seat shall mean an individual user provided access to the capabilities of the Software.

2. Duration: This License shall continue so long as CUSTOMER uses the Software in compliance with this License. Should CUSTOMER breach any of its obligations hereunder, CUSTOMER agrees to return all copies of the Software and this License upon notification and demand by Ektron.

3. Copyright: The Software (including any images, applets, photographs, animations, video, audio, music and text incorporated into the Software) as well as any accompanying written materials (the Documentation) is owned by Ektron or its suppliers, is protected by United States copyright laws and international treaties, and contains confidential information and trade secrets. CUSTOMER agrees to protect the confidentiality of the Software and Documentation. CUSTOMER agrees that it will not provide a copy of this Software or Documentation nor divulge any proprietary information of Ektron to any person, other than its employees, without the prior consent of Ektron; CUSTOMER shall use its best efforts to see that any user of the Software licensed hereunder complies with this license.

4. Limited Warranty: Ektron warrants solely that the medium upon which the Software is delivered will be free from defects in material and workmanship under normal, proper and intended usage for a period of three (3) months from the date of receipt. Ektron does not warrant the use of the Software will be uninterrupted or error free, nor that program errors will be corrected. This limited warranty shall not apply to any error or failure resulting from (i) machine error, (ii) Customer's failure to follow operating instructions, (iii) negligence or accident, or (iv) modifications to the Software by any person or entity other than Company. In the event of a breach of warranty, Customer's sole and exclusive remedy, is repair of all or any portion of the Software. If such remedy fails of its essential purpose, Customer's sole remedy and Ektron's maximum liability shall be or refund of the paid purchase price for the defective Products only. This limited warranty is only valid if Ektron receives written notice of breach of warranty within thirty days after the warranty period expires. In the event of a breach of warranty, Ektron's sole responsibility, and CUSTOMER'S sole and exclusive remedy, is correction of any defect or bug causing the breach of warrant (either by repair or replacement of the Software). In the event this remedy fails of its essential purpose, CUSTOMER'S sole and exclusive remedy shall be refund of the Purchase Price of the defective Software only. This limited warranty is only valid if Ektron receives written notice of breach of warranty within thirty days following the warranty period.

5. Limitation of Warranties and Liability: THE SOFTWARE AND DOCUMENTATION ARE SOLD AS IS AND WITHOUT ANY WARRANTIES AS TO THE PERFORMANCE, MERCHANTABILITY, DESIGN, OR OPERATION OF THE SOFTWARE. BECAUSE OF THE DIVERSITY OF CONDITIONS UNDER WHICH THIS PRODUCT MAY BE USED, NO WARRANTY OF FITNESS FOR A PARTICULAR PURPOSE IS OFFERED. EXCEPT AS DESCRIBED IN SECTION 4, ALL WARRANTIES EXPRESS AND IMPLIED ARE HEREBY DISCLAIMED.

THE REMEDY DESCRIBED IN SECTION 12 SHALL BE CUSTOMER'S SOLE REMEDY FOR ANY PERFORMANCE FAILURE OF THE PRODUCTS. NEITHER COMPANY NOR ITS SUPPLIERS SHALL BE LIABLE FOR ANY LOSS OF PROFITS, LOSS OF BUSINESS OR GOODWILL, LOSS OF DATA OR USE OF DATA, INTERRUPTION OF BUSINESS NOR FOR ANY OTHER INDIRECT, SPECIAL, INCIDENTAL, OR CONSEQUENTIAL DAMAGES OF ANY KIND UNDER OR ARISING OUT OF, OR IN ANY RELATED TO THIS AGREEMENT, HOWEVER CAUSED, WHETHER FOR BREACH OF WARRANTY, BREACH OR REPUDIATION OF CONTRACT, TORT, NEGLIGENCE, OR OTHERWISE, EVEN IF COMPANY OR ITS REPRESENTATIVES HAVE BEEN ADVISED OF THE POSSIBILITY OF SUCH LOSS.

6. Miscellaneous: This License Agreement, the License granted hereunder, and the Software may not be assigned or in any way transferred without the prior written consent of Ektron. This Agreement and its performance and all claims arising from the relationship between the parties contemplated herein shall be governed by, construed and enforced in accordance with the laws of the State of New Hampshire without regard to conflict of laws principles thereof. The parties agree that any action brought in connection with this Agreement shall be maintained only in a court of competent subject matter jurisdiction located in the State of New Hampshire or in any court to which appeal therefrom may be taken. The parties hereby consent to the exclusive personal jurisdiction of such courts in the State of New Hampshire for all such purposes. The United Nations Convention on Contracts for the International Sale of Goods is specifically excluded from governing this License. If any provision of this

License is to be held unenforceable, such holding will not affect the validity of the other provisions hereof. Failure of a party to enforce any provision of this Agreement shall not constitute or be construed as a waiver of such provision or of the right to enforce such provision. If you fail to comply with any term of this License, YOUR LICENSE IS AUTOMATICALLY TERMINATED. This License represents the entire understanding between the parties with respect to its subject matter.

Esker Active X Plug-in, Version 3.9

Active X controls under Netscape

Use License

IMPORTANT: READ CAREFULLY -

Use of the Esker Active X Plug-in, Version 3.9, is subject to the terms and conditions below. BY INSTALLING, COPYING OR OTHERWISE USING THE PLUG-IN, YOU AGREE TO BE BOUND BY THE TERMS AND CONDITIONS BELOW. IF YOU DO NOT AGREE TO THESE TERMS AND CONDITIONS, DO NOT INSTALL, COPY OR USE THE PLUG-IN.

The Plug-in is provided to you as an end-user "as is" without technical support. No rights are granted to you in this license for commercial use or redistribution of any kind. Should you desire to redistribute the Plug-in or include it with other software packages please e-mail Esker at axplug-in@esker.com to find out how you may do so.

DISCLAIMER OF WARRANTIES. TO THE MAXIMUM EXTENT PERMITTED BY APPLICABLE LAW, ESKER AND ITS SUPPLIERS PROVIDE TO YOU THE PLUG-IN AS IS AND WITH ALL FAULTS; AND ESKER AND ITS SUPPLIERS HEREBY DISCLAIM WITH RESPECT TO THE PLUG-IN ALL WARRANTIES AND CONDITIONS, WHETHER EXPRESS, IMPLIED OR STATUTORY, INCLUDING, BUT NOT LIMITED TO, ANY (IF ANY) WARRANTIES OR CONDITIONS OF OR RELATED TO: TITLE, NON-INFRINGEMENT, MERCHANTABILITY, FITNESS FOR A PARTICULAR PURPOSE, LACK OF VIRUSES, ACCURACY OR COMPLETENESS OF RESPONSES, RESULTS, LACK OF NEGLIGENCE OR LACK OF WORKMANLIKE EFFORT, QUIET ENJOYMENT, QUIET POSSESSION, AND CORRESPONDENCE TO DESCRIPTION. THE ENTIRE RISK ARISING OUT OF USE OR PERFORMANCE OF THE PLUG-IN REMAINS WITH YOU.

EXCLUSION OF INCIDENTAL, CONSEQUENTIAL AND CERTAIN OTHER DAMAGES. TO THE MAXIMUM EXTENT PERMITTED BY APPLICABLE LAW, IN NO EVENT SHALL ESKER OR ITS SUPPLIERS BE LIABLE FOR ANY SPECIAL, INCIDENTAL, INDIRECT, OR CONSEQUENTIAL DAMAGES WHATSOEVER INCLUDING, BUT NOT LIMITED TO, DAMAGES FOR: LOSS OF PROFITS, LOSS OF CONFIDENTIAL OR OTHER INFORMATION, BUSINESS INTERRUPTION, PERSONAL INJURY, LOSS OF PRIVACY, FAILURE TO MEET ANY DUTY (INCLUDING OF GOOD FAITH OR OF REASONABLE CARE), NEGLIGENCE, AND ANY OTHER PECUNIARY OR OTHER LOSS WHATSOEVER ARISING OUT OF OR IN ANY WAY RELATED TO THE USE OF OR INABILITY TO USE THE PLUG-IN, OR FAILURE TO PROVIDE TECHNICAL SUPPORT, OR OTHERWISE UNDER OR IN CONNECTION WITH ANY PROVISION OF THIS LICENSE, EVEN IF ESKER OR ANY SUPPLIER HAS BEEN ADVISED OF THE POSSIBILITY OF SUCH DAMAGES.

Due to the complex nature of computer software Esker does not warrant that the Plug-in is completely error-free, will operate without interruption or is compatible with all equipment and software configurations. You are advised to check all work performed with the Plug-in. Do not use the Plug-in in any case where significant damage or injury to persons, property or business may happen if an error occurs. You expressly assume all risks for such use.

(c) 2000 Esker, Inc. All rights reserved.

Copyright to and in the Plug-in remains the property of Esker, Inc. and as such, any copyright notices in the Plug-in are not to be removed.

YOU ACKNOWLEDGE THAT YOU HAVE READ THIS AGREEMENT, THAT YOU UNDERSTAND THIS AGREEMENT, AND UNDERSTAND THAT BY CONTINUING THE INSTALLATION OF THE SOFTWARE, BY LOADING OR RUNNING THE SOFTWARE, OR BY PLACING OR COPYING THE SOFTWARE ONTO YOUR COMPUTER HARD DRIVE, YOU AGREE TO BE BOUND BY THIS AGREEMENT'S TERMS AND CONDITIONS. YOU FURTHER AGREE THAT, EXCEPT FOR WRITTEN SEPARATE AGREEMENTS BETWEEN EKTRON AND YOU, THIS AGREEMENT IS A COMPLETE AND EXCLUSIVE STATEMENT OF THE RIGHTS AND LIABILITIES OF THE PARTIES.

(c) 1999-2000 Ektron, Inc. All rights reserved. LA10031, Revision 1.5

Table of Contents

Product Overview

eWebEditPro's Features.....	1
Requirements	1

About This Manual

Scope of This Manual.....	3
Additional Documentation.....	3

Installing Core Files

Installing Core Files on a Windows Server	4
Testing the Installation	6
Installing Sample Files.....	7
Installing Core Files on a non-Windows Server.....	8
Testing the Installation	9
Installing Sample Files.....	10
Installing Core Files to a Hosted Server	11
Testing the Installation	12
Installing Sample Files.....	13

Installing Sample Files

Installing Sample Files on a Windows Server.....	14
Installing Sample Files on a non-Windows Server	15
Installing Sample Files to a Hosted Server	16

Installing eWebEditPro on a Client

Preparing Client PCs for eWebEditPro.....	17
Adjusting Internet Explorer Security.....	17
Special Requirements for IE 4.0 Browser	18
Installing eWebEditPro on a Client	19
Running Internet Explorer and not Behind Firewall	19
Contents of the CAB Files.....	19
Running Netscape or Behind a Firewall.....	20
Placing the Client Installation File on a Server.....	20
Verifying that the Client Installation Directory is set for Downloading ..	20
Contents of the Client Installation File.....	21

Setting up the Database

Windows-Based Systems	22
How eWebEditPro Interacts with a Database	22
How eWebEditPro Saves to the Database	22
Configuring the Database	23
Non-Windows Based Systems	27
Font_Face Fields	28
Hyperlink Fields.....	29
Images Fields.....	29
wysiwig Fields	29

License Keys

License Key Check.....	30
Inserting License Keys	31
Using eWebEditPro without a License Key	32
Domains in which You Can Use the License Key.....	32
Register Domains, not IP Addresses.....	32

Uninstalling eWebEditPro

Uninstalling eWebEditPro from a Client.....	33
Uninstalling from a Client that was Installed Automatically	33
Uninstalling from a Client that was Installed Manually	33
Uninstalling eWebEditPro from a Server	34
Uninstalling the .exe File	34
Uninstalling the .zip File	34

Integrating eWebEditPro in an PHP Environment

Using the Sample Pages	35
Creating Your Own Page	35
Including a Reference to ewebeditpro.php	35
Setting Up a Form	36
Placing the Editor on the Form	36
Changing Parameter Values	37
Inserting the Editor	38
Adding a Submit Button.....	39
Changing the License Key.....	39

Product Overview

eWebEditPro's Features

eWebEditPro is a web-based, WYSIWYG (**What You See Is What You Get**) second generation editor for web content. Based on ActiveX® technology, **eWebEditPro** allows content managers to create and edit web pages in a word processor-like environment directly from a web browser. The editor supports hypertext, bookmarks, tables and images. **eWebEditPro** also lets content managers cut and paste text directly from Microsoft Word, Microsoft Excel, and other Windows applications while preserving formatting.

Designed for easy integration with a database such as SQL or Access, the editor saves content as HTML or XHTML that can then be displayed in dynamic web pages without the editor being present. **eWebEditPro** is a great tool for any content management team that needs to easily edit formatted text with little or no knowledge of HTML. Content can also be saved as plain text, without HTML formatting.

You can use **eWebEditPro** with any web development platform, such as Allaire's ColdFusion, Microsoft's Active Server Pages, JSP, PHP, StoryServer Vignette, Interwoven Teamsite, and Perl.

Requirements

Browser for Editing	<ul style="list-style-type: none">• Microsoft Internet Explorer, version 4.01 or higher• Netscape Navigator, version 4.7x (with IE 4.01 or higher installed)• Microsoft Windows 95, 98, NT, 2000 or later
---------------------	---

Browser for Viewing	<ul style="list-style-type: none">● Microsoft's Internet Explorer, version 3.0 or higher● Netscape Navigator, version 3.0 or higher
Dynamic Web Server	Based on the system requirements of the dynamic application server and/or web server you are using.
Client Hardware	Suggested minimum requirement:: IBM compatible Pentium 166 with 64 Mb RAM.

About This Manual

Scope of This Manual

This manual explains the steps required to install **eWebEditPro** in the following environments.

- Windows server
- non-Windows server
- hosted server

When installing **eWebEditPro**, you first install core files. Then, you install the sample files for your platform.

Subsequent sections of this manual explain additional installation procedures (such as updating your license keys), how to uninstall **eWebEditPro**, and how to integrate it onto a web page so that users can access it.

Additional Documentation

The following **eWebEditPro** manuals are also available from Ektron's web site, www.ektron.com.

- **eWebEditPro** Editor User Guide
- **eWebEditPro** Developer's Reference Guide

Installing Core Files

Installing Core Files on a Windows Server

After you receive email from Ektron that contains license keys and download the core installation file, follow these steps to install **eWebEditPro** on a Windows server.

WARNING!

If you have previously installed **eWebEditPro**, have modified the sample files and do not want the update to overwrite them, copy the modified files to a different folder before beginning the update. After you install the new version of **eWebEditPro**, move the files back to the `ewebeditpro` folder.

Also, follow instructions about making a copy of your license keys before beginning the update.

1. If a previous version of **eWebEditPro** was installed on your server, follow these steps to remove it. Otherwise, proceed to Step 2.
 - Copy your license keys into a Notepad file. (For more information, see “License Keys” on page 30.) You will need them during the installation.
 - Double click the core installation file.
 - When given a choice to **Modify**, **Repair** or **Remove** the file, choose **Remove**. This action deletes the old version of **eWebEditPro**.
2. Make sure that the client installation directory is set to download instead of run `.exe` files. To do this, set the `ewebeditpro/clientinstall` directory to read-only status. (See your system administrator for details on how to do this.)

-
3. Double click the core installation file that you downloaded. Follow the instructions on the screen to complete the installation.

During the installation, you are prompted to enter license keys.

- If you are upgrading from a previous version, insert the license keys that you copied in Step 1. (This procedure is described in “Inserting License Keys” on page 31.) You can also add additional licenses at this time.
- If this is the first time you have installed **eWebEditPro**, insert the license keys that Ektron sent you via email.

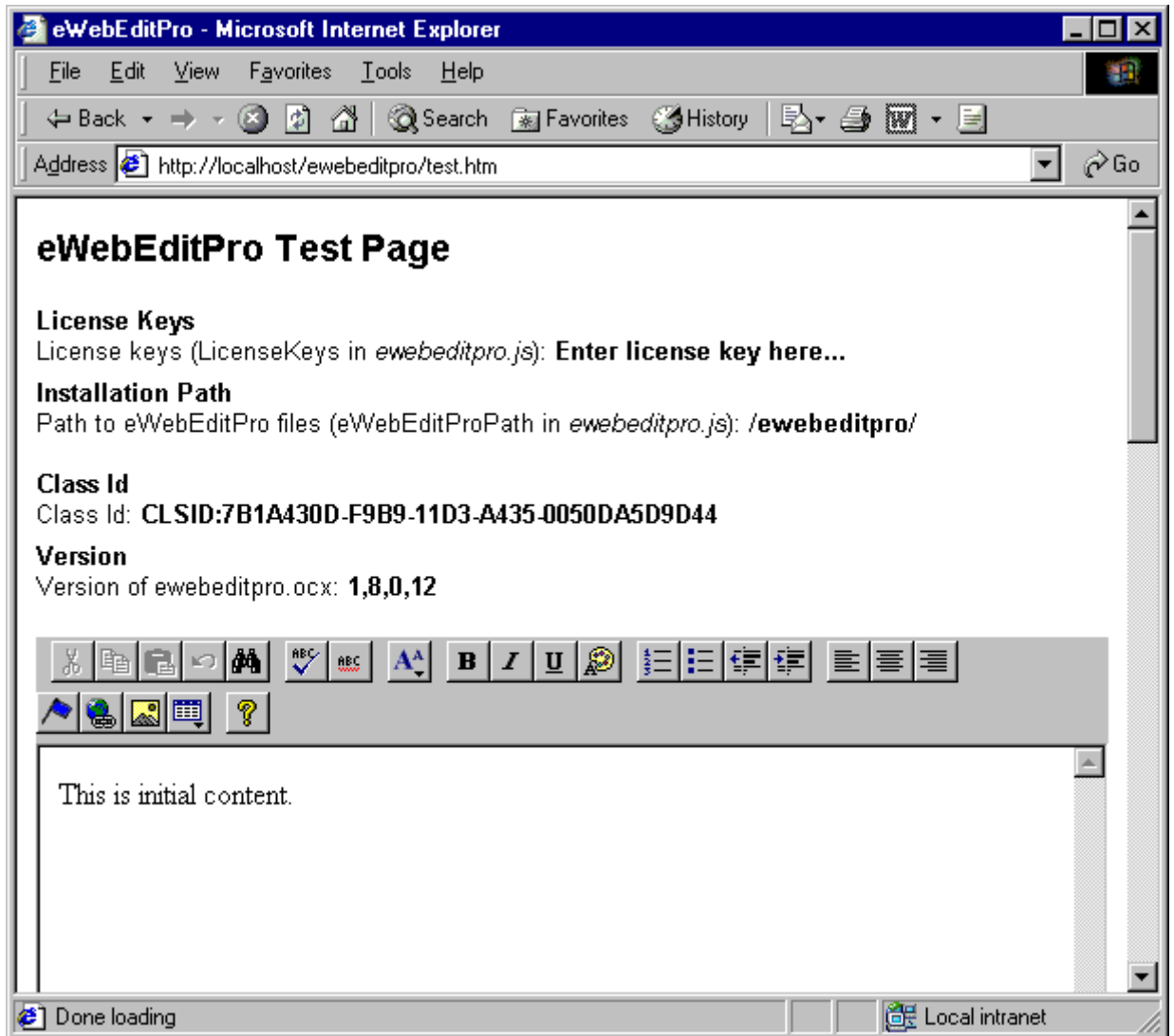
WARNING!

Ektron recommends that you do *not* change the location of the installed files. If you do, **eWebEditPro** may not operate properly unless you modify the relative path to the host name.

The core file installation includes two sample files (located in `ewebeditpro\samples\html`) that you can use to see how to integrate **eWebEditPro** on an HTML page.

Testing the Installation

To test the installation, click the Windows **Start** button > **Programs** > **Ektron** > **eWebEditPro 1.8** > **Test eWebEditPro**. If you see an editor on the page (as illustrated below), the installation was successful.



Installing Sample Files

If you want to install sample **eWebEditPro** files, proceed to “Installing Sample Files on a Windows Server” on page [14](#).

Installing Core Files on a non-Windows Server

After you receive email from Ektron that contains license keys and download the core installation file, follow these steps to install **eWebEditPro** on a non-Windows server.

WARNING!

If you have previously installed **eWebEditPro**, have modified the sample files, and do not want the update to overwrite them, copy the modified files to a different folder before beginning the update. After you install the new version of **eWebEditPro**, move the files back to the ewebeditpro folder. Also, follow instructions about making a copy of your license keys before beginning the update.

1. Copy your license keys into a simple text editor. (For more information, see “License Keys” on page 30.) You will need them during installation.
2. Uninstall the current version of **eWebEditPro**.
3. If one does not already exist, create a directory in your web root named `/ewebeditpro`. For example, `mywebsite.com/ewebeditpro`.
4. Unzip the `ewebeditprocore.zip` file to the `mywebsite.com/ewebeditpro` directory. Be sure to preserve the directory structure. The unzip action creates two subdirectories and many files.
 - `ewebeditpro/clientinstall`
 - `ewebeditpro/samples/html`

WARNING!

Ektron recommends that you do *not* change the location of the installed files. If you do, **eWebEditPro** may not operate properly unless you modify the relative path (as explained in Step 6 below).

5. Update your license key information. To do this
 - open `mywebsite.com/ewebeditpro/ewebeditpro.js`
 - paste the license keys that you copied in Step 1 between the quotes that follow `var LicenseKeys =`

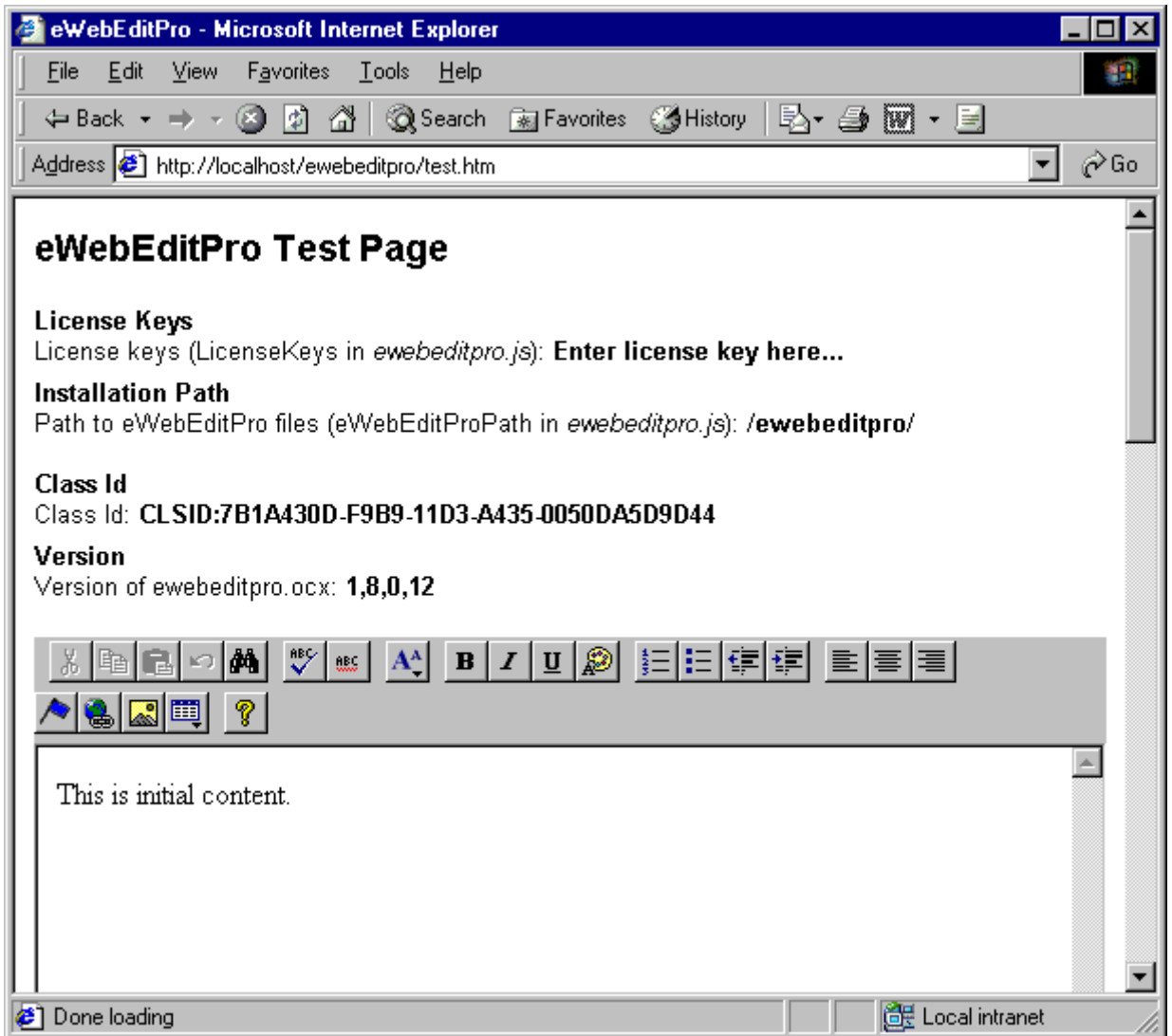
-
6. If necessary, update your relative path to the host name. To do this
 - open `mywebsite.com/ewebeditpro/ewebeditpro.js`
 - on the line that reads `var eWebEditProPath = "/ewebeditpro/"`, replace `/ewebeditpro/` with the new relative path

Testing the Installation

To test the installation, enter the following in your browser address bar.

```
http://mywebsite.com/ewebeditpro/test.htm
```

If you see an editor on the page (as illustrated below), the installation was successful.



Installing Sample Files

If you want to install sample **eWebEditPro** files, proceed to “Installing Sample Files on a non-Windows Server” on page 15.

Installing Core Files to a Hosted Server

If an Internet Service Provider (ISP) hosts your web site, follow these steps.

WARNING!

If you previously installed **eWebEditPro**, modified the sample files, and do not want the update to overwrite them, copy the modified files to a different folder before beginning the update. After you install the new version of **eWebEditPro**, move the files back to the `ewebeditpro` folder.

Also, follow instructions about making a copy of your license keys before beginning the update.

1. Copy your license keys into a simple text editor. (For more information, see “License Keys” on page 30.) You will need them during the installation.
2. Remove the current version of **eWebEditPro**.
3. If one does not already exist, create a directory on your computer named `/ewebeditpro`.
4. Make sure that the client installation directory is set to download instead of run `.exe` files.
5. Unzip the `ewebeditprocore.zip` file to the `/ewebeditpro` directory. Be sure to preserve the directory structure. The unzip action creates two subdirectories and many files.
 - `ewebeditpro/clientinstall`
 - `ewebeditpro/samples/html`

WARNING!

Ektron recommends that you do *not* change the location of the installed files. If you do, **eWebEditPro** may not operate properly unless you modify the relative path to the host name (as explained in Step 7 below).

6. Update your license key information. To do this
 - open the folder to which you installed `ewebeditpro`
 - open `ewebeditpro.js`

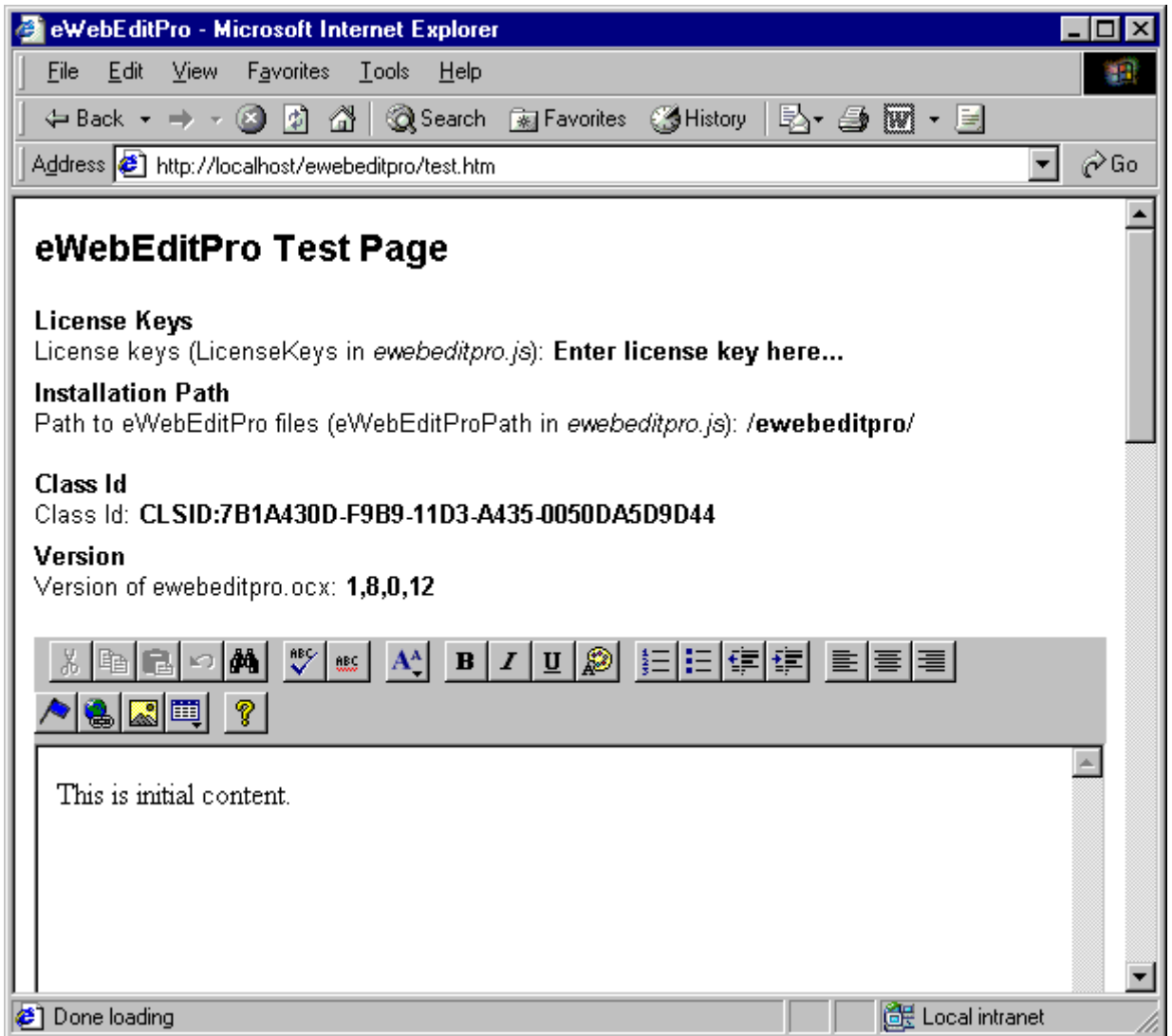
-
- paste the license keys that you copied in Step 1 between the quotes that follow `var LicenseKeys =`
7. If necessary, update your relative path to the host name. To do this
 - open the folder to which you installed ewebeditpro
 - open `ewebeditpro.js`
 - on the line that reads `var eWebEditProPath = "/ewebeditpro/"`, replace `/ewebeditpro/` with the new relative path.
 8. Transfer by FTP the ewebeditpro directory with its content and subdirectories to the domain root of the host server.

Testing the Installation

To test the installation, enter the following in your browser address bar.

`http://mywebsite.com/ewebeditpro/test.htm`

If you see an editor on the page (as illustrated below), the installation was successful.



Installing Sample Files

If you want to install sample **eWebEditPro** files, proceed to “Installing Sample Files to a Hosted Server” on page 16.

Installing Sample Files

Installing Sample Files on a Windows Server

This section describes how to install the **eWebEditPro** sample files on a Windows server.

After you receive email from Ektron that contains license keys, install the core files, and download the sample files, follow these steps to install the sample files on a server.

1. Double-click the sample file that you downloaded. Follow the instructions on the screen to complete the installation.
2. To learn about installing **eWebEditPro** on client PCs, see “Installing eWebEditPro on a Client” on page 17.
3. Verify that the options.xml file resides in the `ewebeditpro` directory. The options.xml file lets system administrators control **eWebEditPro**.

WARNING! The options.xml file must remain in the ewebeditpro folder.

Installing Sample Files on a non-Windows Server

After you receive email from Ektron that contains license keys, install the core files, and download the sample files, follow these steps to install the sample files on a server.

1. Extract the .zip file that you downloaded to
C:\Inetpub\wwwroot\ewebeditpro.
2. To use the sample files, configure the sample database file. For details, see “Setting up the Database” on page 22.
3. To learn about installing **eWebEditPro** on client PCs, see “Installing eWebEditPro on a Client” on page 17.
4. Verify that the options.xml file resides in the ewebeditpro directory. The options.xml file lets system administrators control **eWebEditPro**.

WARNING! The options.xml file must remain in the ewebeditpro folder.

Installing Sample Files to a Hosted Server

After you receive email from Ektron that contains license keys, install the core files, and download the sample files, follow these steps to install the sample files on a hosted server.

1. Extract the sample files to the `/ewebeditpro` directory.
2. Transfer by FTP the ewebeditpro directory with its content to the *domain root* of the host server.
3. Configure a database.
 - If the server is Windows-based, follow the instructions in “Windows-Based Systems” on page 22.
 - If the server is not Windows-based, follow the instructions in “Non-Windows Based Systems” on page 27.
4. You are ready to use **eWebEditPro**. To test it, type the following URL into your browser’s address bar.

`http://www.mydomain.com/ewebeditpro/test.htm`

Installing eWebEditPro on a Client

eWebEditPro installs automatically on an Internet Explorer client unless the client is behind a firewall or has security settings that prevent the installation. Clients running Netscape require an installation program.

This section explains

- preparing client PCs to run **eWebEditPro**
- loading the client installation file on clients that require a manual installation

Preparing Client PCs for eWebEditPro

This section explains how to adjust Internet Explorer security settings and requirements for clients running IE 4.0.

NOTE For Windows NT 4.0 or 2000: When installing on an NT client, be sure you have permissions to install software on your machine.

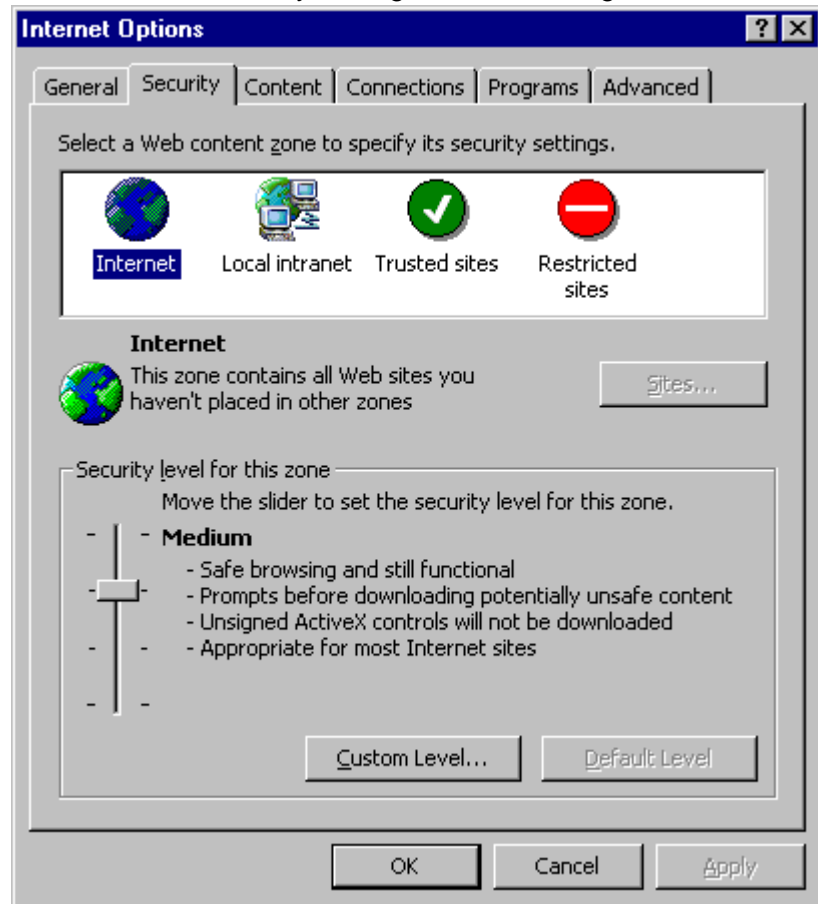
Adjusting Internet Explorer Security

Before you can install **eWebEditPro** on a client running Internet eWebEditProExplorer, the browser's security setting must be medium or lower. High security prevents the installation of ActiveX controls.

To verify that IE security is set properly, follow these steps.

1. With Internet Explorer open on the client
 - from IE 5, click on **Tools > Internet Options**
 - from IE 4, click on **View > Internet Options menu**

2. Click the Security tab.
3. Ensure the security setting is not set to High.



Special Requirements for IE 4.0 Browser

WARNING! The required minimum version of Internet Explorer is 4.01 SP 1.

NOTE Ignore this section if you installed **eWebEditPro** from the .exe file. Follow these directions only if you downloaded and installed the .zip file.

To use **eWebEditPro** with Internet Explorer 4, you must download and install the Microsoft XML Parser Redistributable file (xmlredist.exe) on the client. The file is available from Microsoft's web site at: <http://msdn.microsoft.com/downloads/tools/xmlparser/xmldl.asp>.

If the XML Parser is missing, a message appears stating that it is required. Without the parser, **eWebEditPro** will not work properly.

Installing eWebEditPro on a Client

This section explains how **eWebEditPro** is installed on a client when the client is running

- Internet Explorer and is not behind a firewall
- Netscape or Internet Explorer behind a firewall

Running Internet Explorer and not Behind Firewall

When a client running Internet Explorer that is not behind a firewall first accesses a web page that hosts **eWebEditPro**, the browser downloads the CAB files from the server.

This download requires a connection to the server but does not require an Internet connection. The browser then uses the CAB files to install, register, and activate the **eWebEditPro** files.

When the user later accesses that web page, the browser checks the client's version of **eWebEditPro** to see if it is older than the version on the server. If a newer version exists on the server, the browser updates the client.

Contents of the CAB Files

The client installation file provides the primary CAB file, `ewebeditpro.cab`, and several secondary CAB files. The `ewebeditpro.cab` is signed by Ektron, Inc. The other CAB files are signed by Microsoft.

`ewebeditpro.cab` contains two files:

- `ewebeditpro.inf`, which provides setup instructions, refers to all the required files (including the secondary CAB files), and contains registry information
- `ewebeditpro.ocx`, the ActiveX control file

Running Netscape or Behind a Firewall

The following clients must run the client installation file in order to use **eWebEditPro**.

- those using Netscape
- those behind a firewall that prevents the download of ActiveX controls

When such a client first accesses a web page that hosts **eWebEditPro**, the browser displays a text box where **eWebEditPro** should appear. Below the box is text that instructs the user to click it to begin the installation. The user follows the instructions to install the client installation file. After completing the installation, the user can begin using **eWebEditPro**.

Placing the Client Installation File on a Server

The client installation file is placed on the server when you install **eWebEditPro**.

- If you download the executable file (.exe), the client installation file is automatically placed in the `ewebeditpro/clientinstall` directory.
- If you download the .zip file, the client installation file is placed in the `ewebeditpro/clientinstall` directory when you unzip the file.
- If you are using a hosted server, the client installation file is placed in the `ewebeditpro/clientinstall` directory when you unzip the file. It is shipped to your service provider when you FTP the `ewebeditpro` directory to the host server.

Verifying that the Client Installation Directory is set for Downloading

Important! Make sure the client installation directory is set to download rather than execute .exe files. To test, follow these steps.

1. Set your browser to `http://mywebsite.com/ewebeditpro/test.htm`.
2. Click on the client install hyperlink.
3. You should be prompted to download the file.

-
- If prompted to download the file, click **Cancel**. Your server is properly configured.
 - If there is no response, you probably need to reconfigure the server to download rather than execute binary files. Close the browser. (Contact your system administrator to reconfigure your server.)

Contents of the Client Installation File

The client installation file contains ewebeditpro.ocx, the ActiveX control file, and the .dll files required to run **eWebEditPro**.

Setting up the Database

This sections explains how to set up a sample database for both Windows and non-Windows based systems.

Windows-Based Systems

How eWebEditPro Interacts with a Database

eWebEditPro works with any database and any dynamic web server. The sample database stores the following information for the sample web pages.

- available fonts
- hyperlinks
- images
- web content

Ektron provides a sample Microsoft Access database, `ewebeditpro.mdb`. The database serves to familiarize you with a possible way to store content created or modified by the editor.

You can use the sample database that Ektron provides or choose a different database. “Configuring the Database” on page [23](#) explains how to set up the sample database or change the database that stores content.

How eWebEditPro Saves to the Database

When a user saves web content from the editor, **eWebEditPro** does not write directly to the database. Instead, an `OnSubmit` event executes JavaScript to read the contents from **eWebEditPro** into a hidden field. Then, the web server’s action page writes the content to the database.

Configuring the Database

NOTE If you are installing **eWebEditPro** on a hosted server, ask the administrator of the hosted server to follow these steps to set up the database.

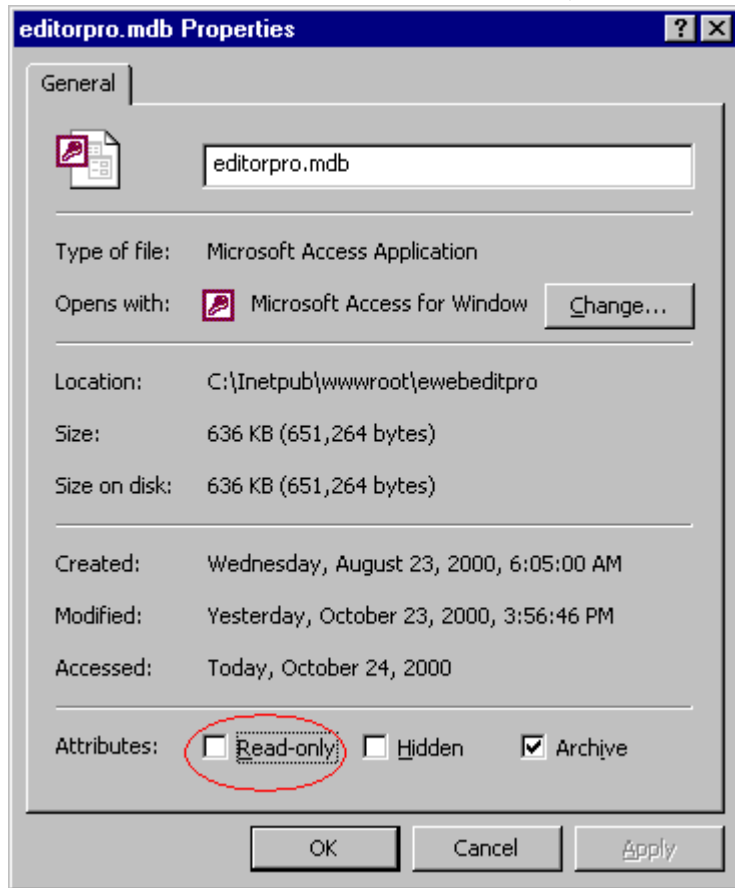
eWebEditPro's installation file configures a sample Microsoft Access database, `ewebeditpro.mdb`, in `www.mycompany.com\ewebeditpro`.

However, if you install **eWebEditPro** from the `ewebeditpro.zip` file, you must manually configure the database file. You would also follow this procedure to change the database to which web content is saved.

To configure the database, follow these steps.

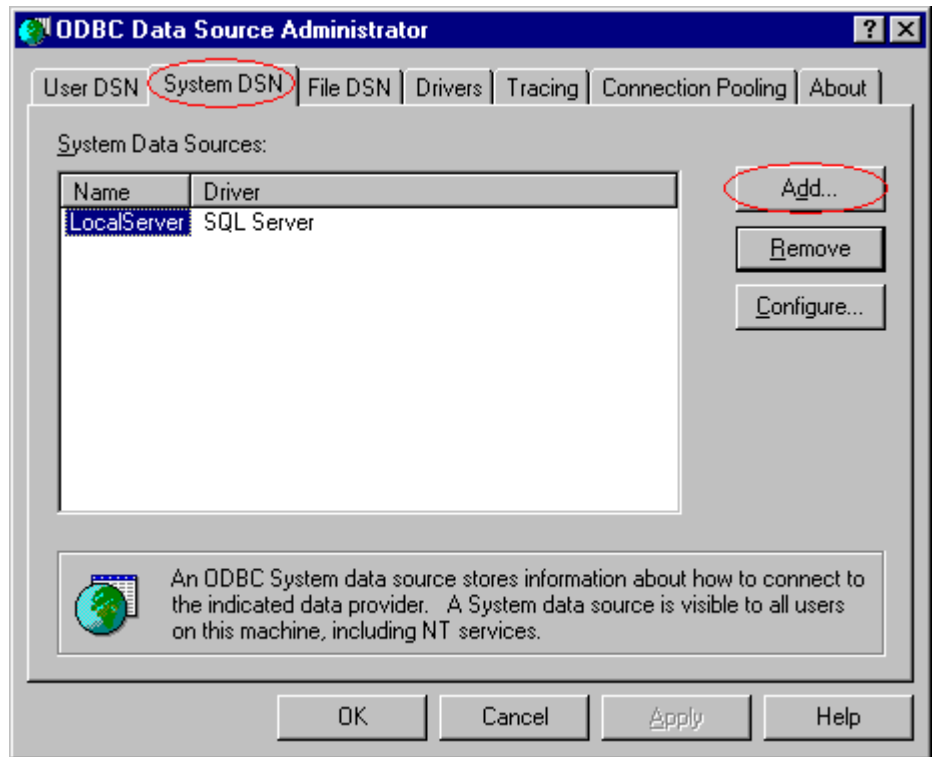
1. Make sure that the database file (`ewebeditpro.mdb`) is not read-only. To see if the file is read-only
 - Open Windows Explorer, then go to `\inetpub\wwwroot\ewebeditpro` and select `ewebeditpro.mdb`.
 - Right click the mouse and select **Properties**.

- Make sure that the read-only box on the Properties windows is not checked. If the box is checked, click it to uncheck it.

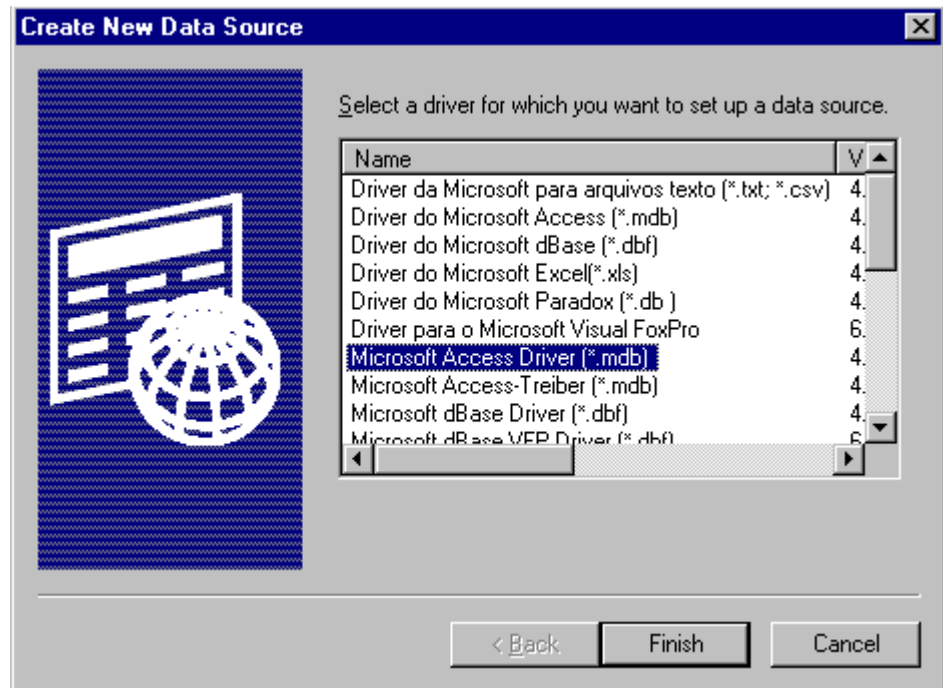


2. Open ODBC Data Sources. To do this
 - in Windows 95 or 98, click **Start > Settings > Control Panel > Data Sources (ODBC)**.
 - in Windows NT 4.0 or 2000, click **Start > Settings > Control Panel > Administrative Tools > Data Sources (ODBC)**.

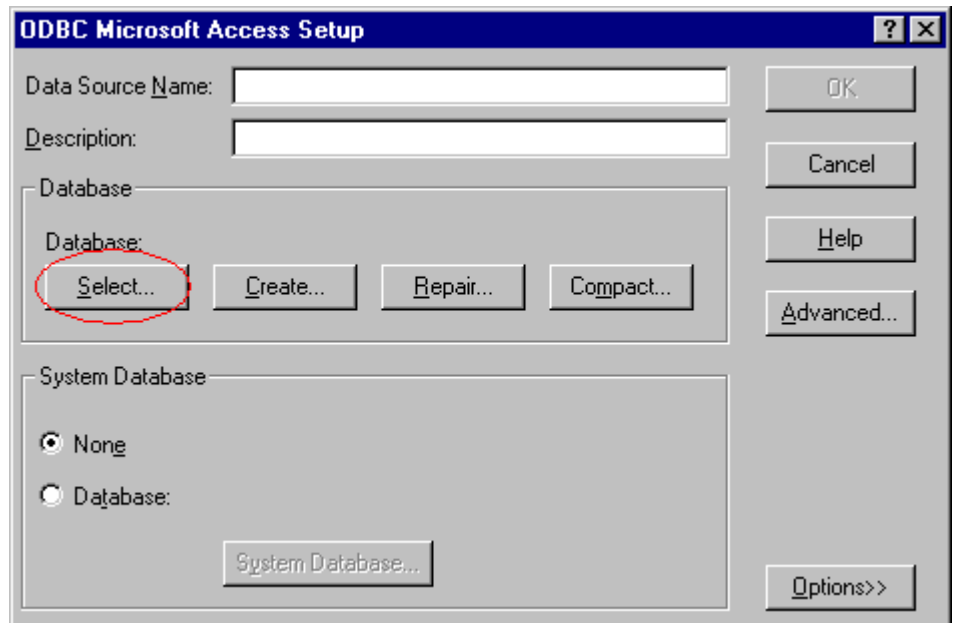
3. Click the **System DSN** tab and then the **Add** button.



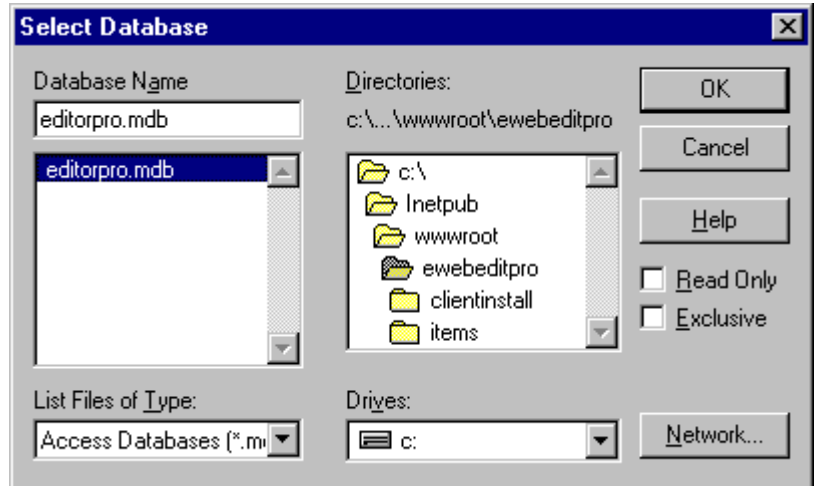
4. On the Create New Data Source screen, select **Microsoft Access Driver (*.mdb)**, then click **Finish**.



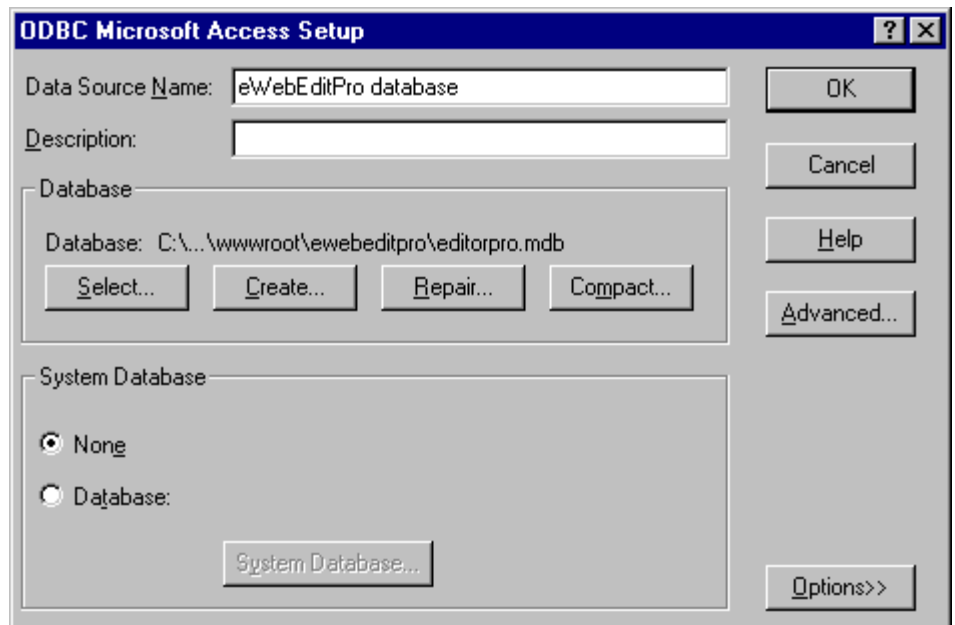
5. On the ODBC Microsoft Access Setup dialog box, click **Select**.



6. Select the editorpro.mdb database in the C:\Inetpub\wwwroot\ewebeditpro\samples\your platform\database folder.



7. Enter **ewebeditpro** as the Data Source Name, then click **OK**. You must enter **ewebeditpro** for the samples to work.



Non-Windows Based Systems

Ektron provides a sample Microsoft Access database. However, it does not work on a non-Windows platform.

So, you must set up an ODBC compliant database that operates on a non-Windows platform, such as MySQL, Oracle, Sybase, etc.

You can use the sample Access database as a model when creating your database. The sample Access database has the following tables.

- Font_Face
- Hyperlink
- Images
- wysiwig

Each table's fields and field values are described below.

Font_Face Fields

Font_id (datatype: autonumber)	Font_Face (datatype: Text)
1	Arial, Helvetica
2	Verdana
3	Comic Sans MS
4	Times New Roman
5	Lucida Console

Hyperlink Fields

Hyperlink_id (datatype: autonumber)	Hyperlink_title (datatype: text)	Hyperlink_location (datatype: text)
1	Ektron	http://www.ektron.com

Images Fields

image_id (datatype: autonumber)	image_title (datatype: text)	filename (datatype: text)	deleted (datatype: number)	site_id (datatype: number)
0	test	ewebeditpro/ samples/asp/ database/items/ lock.gif	0	0

wysiwig Fields

edit_id (datatype: autonumber)	edit_title (datatype: text)	edit_html (datatype: memo)
5	test	test

License Keys

Ektron controls the use of **eWebEditPro** through a license key, a unique code assigned to your domain when you purchase **eWebEditPro**. Your license key is included in the email that Ektron sends when you request **eWebEditPro** from Ektron's web site.

If you download the executable (.exe) file, you are prompted to enter a license key while installing that file. **eWebEditPro** then stores the license key in the ewebeditpro.js file.

If you already installed **eWebEditPro** or you are installing the .zip file, you must insert the license key into the ewebeditpro.js file. (This procedure is described in "Inserting License Keys" on page 31.)

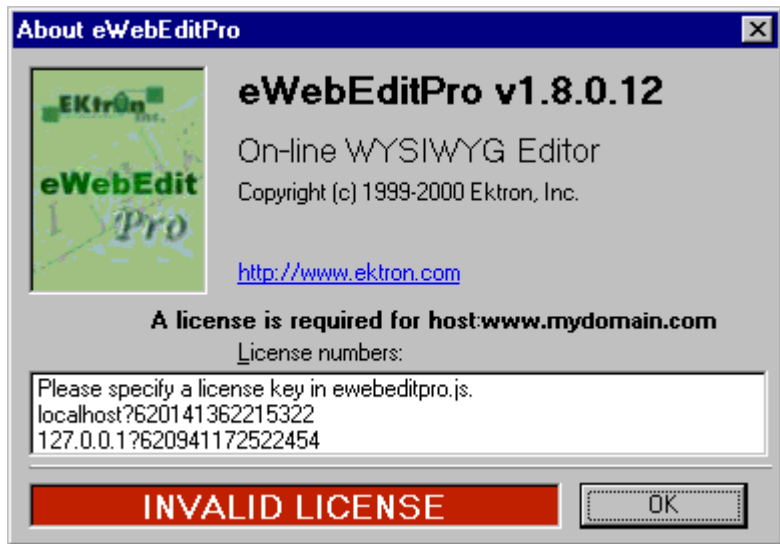
Typically, the ewebeditpro.js file stores a license key for a public server, a test server, and a development server. But, you can enter the keys in any manner.

License Key Check

When you load a web page that contains the editor, **eWebEditPro** checks the license key(s) against the domain.

- If one of the license keys is valid, the editor appears.
- If no valid license key is found, the editor is disabled. To help you troubleshoot the problem, the About eWebEditPro dialog window appears and displays the license keys set in the ewebeditpro.js file

An expired license key is not valid.



Inserting License Keys

To insert the license keys, follow these steps.

1. Edit the ewebeditpro.js file, which is located in the ewebeditpro directory.
2. Within that file, look for `var LicenseKeys =`.
3. After the equal sign (=), enter the license key(s) provided in the email, surrounded by quotes. If you are entering more than one license key, separate each with a comma.

Here is an example.

```
var LicenseKeys = "www.mydomain.com?12401241247124,  
staging.server.com?12409812412"
```

WARNING!

If you install a test version of **eWebEditPro**, and later purchase it, Ektron sends you email with license keys for the purchased product. When you receive the new license keys, replace the old keys in the ewebeditpro.js file with the new ones. If you do not, when the test license key expires, the license key check will fail and users will be denied access to **eWebEditPro**.

Using eWebEditPro without a License Key

For evaluation purposes, you can use **eWebEditPro** without a license key. To do this, enter the localhost IP address (127.0.0.1) in the address bar. You can only publish these pages locally -- you cannot post them to a web server.

Domains in which You Can Use the License Key

The license key is assigned to your base URL, which is typically your domain name. For example, if your domain name is `www.mycompany.com`, the license key follows this pattern: `www.mycompany.com?1234567890`. The key also works with `mycompany.com`, that is, without the `www`.

You can use the editor in any subdirectory to that URL. For example, in an ASP environment, you can use `www.mycompany.com/sales/editpro.asp`.

Each domain name requires its own license key. For example, to support the domain names, `www.mycompany.com`, `sales.mycompany.com` and `support.mycompany.com`, you need three license keys.

Register Domains, not IP Addresses

When you purchase a license key, be sure to register a domain name, not an IP address. For example, register `www.mycompany.com`, not `192.168.0.1`.

Although **eWebEditPro** supports IP addresses, the domain that you license becomes the required URL in the browser address. For example, if you register `192.168.0.1` in an ASP environment, you would need to access the page with the editor as `http://192.168.0.1/somedirectory/editorpage.asp`.

Since users would typically not identify a web page by its IP address, you should register the domain name instead.

Uninstalling eWebEditPro

This section explains how to uninstall **eWebEditPro** from a client or a server.

Uninstalling eWebEditPro from a Client

As explained in “Installing eWebEditPro on a Client” on page 19, there are two ways to install **eWebEditPro** on a client.

Similarly, there are two client uninstall procedures: one for clients that were installed automatically through Internet Explorer, and another for clients that were installed manually (using the .exe file).

Uninstalling from a Client that was Installed Automatically

To uninstall **eWebEditPro** from a client that was installed automatically, follow these steps.

1. Close any open sessions of **eWebEditPro**.
2. On Windows 95 or 98, open C:\Windows\Downloaded Program Files.
On Windows NT or 2000, open C:\Winnt\Downloaded Program Files.
3. Right click eWebEditorPro.eWebEditPro.
4. Select **Remove**.

Uninstalling from a Client that was Installed Manually

To uninstall **eWebEditPro** from a client that was installed manually, follow these steps.

1. Close any open sessions of **eWebEditPro**.
2. Click on Windows **Start** button > **Settings** > **Control Panel** > **Add/Remove Programs**.
3. Click on **eWebEditPro** and then **Change/Remove**.

-
4. Follow the instructions on the screen to complete the removal.

Uninstalling eWebEditPro from a Server

You can install **eWebEditPro** on a server using either an .exe file or a .zip file. Similarly, there are two server uninstall procedures.

Uninstalling the .exe File

To remove **eWebEditPro** from a server that was installed using the .exe file, follow these steps.

1. Close any open sessions of **eWebEditPro**.
2. Click on Windows **Start** button > **Settings** > **Control Panel** > **Add/Remove Programs**.
3. Click on **eWebEditPro** and then **Change/Remove**.
4. Follow the screen instructions to complete the removal.

Uninstalling the .zip File

To remove **eWebEditPro** from a server that was installed using the .zip file, follow these steps.

1. Close any open sessions of **eWebEditPro**.
2. Delete the `/ewebeditpro` directory.
3. Unregister the database. To do this, undo the steps explained in “Setting up the Database” on page [22](#).

Integrating eWebEditPro in an PHP Environment

Using the Sample Pages

When you download **eWebEditPro**, Ektron provides sample pages that include the editor. The default location is `www.mywebsite.com/ewebeditpro/samples/php`.

You should copy these samples to another directory or rename them, and then modify them as needed for your users. If you do not copy them, any changes you make are overwritten when you reinstall or upgrade **eWebEditPro**.

Creating Your Own Page

If you want to create a new PHP page and place **eWebEditPro** on that page, the page needs to include these actions.

1. Include the `ewebeditpro.php` file.
2. Set up a form.
3. Place the editor on the form.
4. Add a submit button.

Finally, you would update your License Key information as needed.

The rest of this section explains how to complete these tasks.

Including a Reference to `ewebeditpro.php`

Your PHP page must contain an include command that specifies a relative path to the `ewebeditpro.php` file. Place the `include` line within the page's head tags.

Use this syntax to indicate a relative path to the domain name of this file.

```
<head>  
  
<?php include("../../../../../ewebeditpro.php"); ?>  
  
</head>
```

Setting Up a Form

When setting up a form, follow these steps.

1. Declare a form.
2. Enter a url as the action. This defines the page that manipulates the user's input when the user presses the submit button.
3. Enter **Post** as the method.

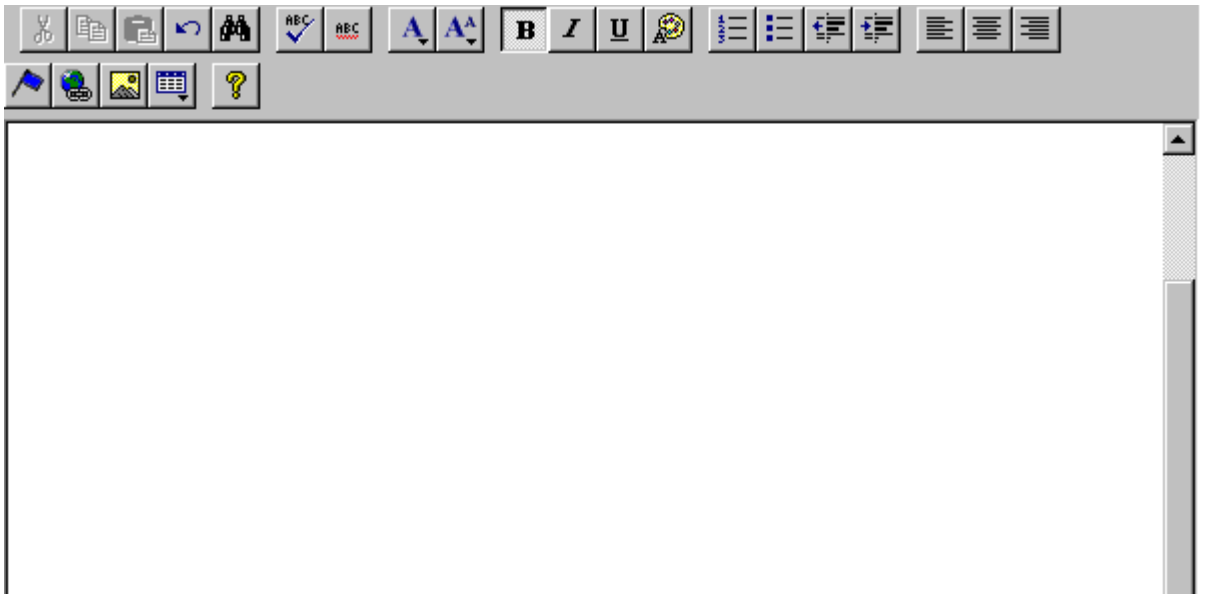
Here is a sample form declaration.

```
<form action="multiedit.php?preview" method="POST">
```

Placing the Editor on the Form

Place the editor within the form tags as a box whose width and height you specify.

This illustration depicts the editor appearing as a box.



For each editor that you want to place on the web page, you


- change parameter values as needed
- insert the editor

Changing Parameter Values

If you want to change parameters that affect all instances of the editor, edit the `ewebeditprodefaults.js` file using a standard text editor.

(For a description of each parameter, see the **eWebEditPro** Developer's Reference Guide.)

To change the parameters only for the instance of **eWebEditPro** that you are placing on the PHP page, enter the following code. In this example, you edit the parameters to remove the About button

() from the toolbar.

```

<script language="JavaScript">

eWebEditPro.parameters.reset();

eWebEditPro.parameters.buttonsAbout= "False";

</script>

```

If you are placing more than one editor on a page, and you want the parameters for each editor to be different, begin the parameter code with `eWebEditPro.parameters.reset()`. This line restores the parameters to the default values set in `ewebeditprodefaults.js`.

Inserting the Editor

To place the editor on a PHP page, enter a line with the following elements within the form.

```

<?php echo eWebEditProEditor("field name", width, height,
                             $initial_content, $WDDX_packet); ?>

```

Argument	Description
field name	Enter the name of the field that stores content within quotes (" "). It does not matter what the name is, but the field name on the page that retrieves the content must match this name.
width, height	Enter the width and height of the editor in percent or pixels. <ul style="list-style-type: none"> • If a percent, enclose the value in quotes (" ") and follow it with a percent sign (%), for example "50%". • If pixels, quotes are optional, for example, 500.
initial content	If you want some text to appear in the editor the first time a user views it, you can enter text or a variable that contains the text. <ul style="list-style-type: none"> • To enter text, enclose it within quotes (" "). • To enter a variable, define it elsewhere in the file.

Argument	Description
WDDX packet	The WDDX packet. (The WDDX packet is described in the eWebEditPro Developer's Reference Guide.) If this instance of the editor does not use font styles, Quick Links or images, enter a double quote (""). If you enter "" for the WDDX argument, the font style button does not appear on the toolbar.

Here is an example of a line that calls the editor. In this example, the initial content is defined in the variable `strContent1`, which is defined elsewhere in the file.

```
<?php echo eWebEditProEditor("TextHTML1", "100%", 250, $strContent1,
                             $FontHyperlinkImagesList); ?>
```

Adding a Submit Button

Add a standard HTML submit button that allows the user to send the content to the web server after entering it. Here is an example of a line that contains a submit button.

```
<input type="submit" name="btnSubmit" value="Preview">
```

Changing the License Key

When you installed **eWebEditPro**, you probably entered a temporary license key. To change that key or add additional license keys, see "License Keys" on page 30.

Index

B

- browser
 - Internet Explorer
 - adjustments, 17
 - requirements, 1
 - hardware, 2
 - viewing, 2
 - web server, 2

C

- CAB files
 - contents, 19
 - files included in, 19
 - with Internet Explorer, 19
- clients
 - installing
 - IE and behind a firewall, 20
 - IE and not behind firewall, 19
 - Netscape, 20
 - uninstalling, 33

D

- database
 - configuring, 22
 - non-Windows based systems, 27
 - windows-based systems, 23
 - how eWebEditPro files to, 22
 - non-Windows, 27

H

- hardware requirements, 2

I

- installation
 - client
 - IE and behind a firewall, 20
 - IE and not behind firewall, 19
 - Netscape, 20
 - server
 - hosted, 16
 - non-Windows, 15
 - Windows, 14
- integrating eWebEditPro, 35
- Internet Explorer
 - 4.0 settings, 18
 - adjusting security, 17

L

- license keys
 - domains supported, 32
 - domains where used, 32
 - inserting, 31
 - purpose, 30
 - registering domains, 32

O

- options.xml file
 - windows-based installation, 14

R

- removing eWebEditPro from computer, 33
- requirements, 1

S

- sample files
 - maintaining during update, 4, 8, 11
- sample pages, using, 35
- security, adjusting, Internet Explorer, 17
- server
 - installing
 - hosted, 16
 - non-Windows, 15
 - Windows, 14
 - uninstalling, 34

U

- uninstalling, 33

W

- web page
 - creating, 35
 - add submit button, 39
 - change license key, 39
 - place editor on form, 36
 - refer to eWebEditPro.php, 35
 - set up form, 36
 - web server requirements, 2

X

- XML parser, 18